

2+2 Dryer station

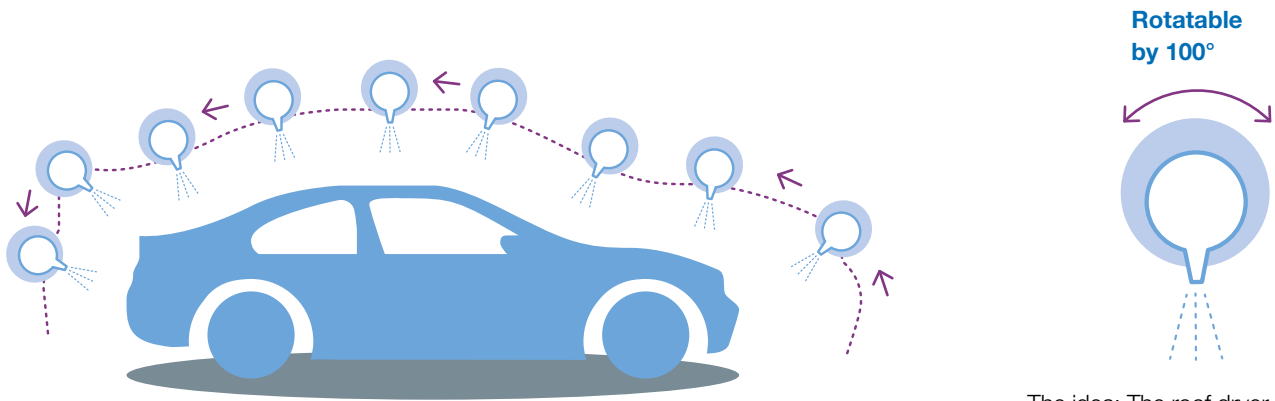
Going up, please do not brake

 WashTec

“How do I achieve best drying results with minimal energy costs?”

Easy – with the state of the art 2+2 dryer station by WashTec.

WashTec 2+2 dryer station: follows the car's contour and reduces energy costs.

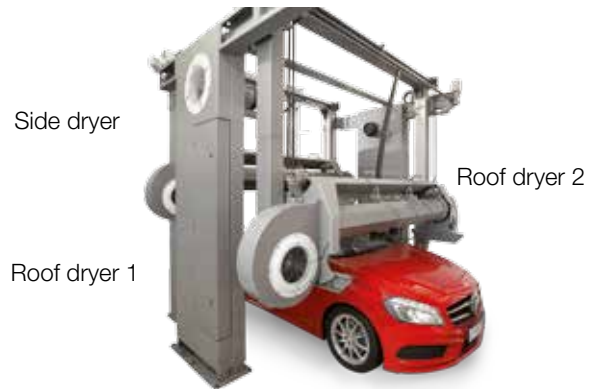


The idea: The roof dryer precisely follows the vehicle's contours.

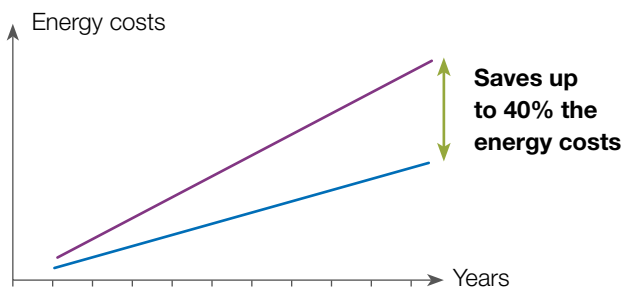
How it works:

The WashTec 2+2 dryer station consists of 2 side fans, each with 7.5 kW, and two roof fans with 2x3 kW each. The roof nozzle moves vertically to the vehicle's contours and can rotate by up to 100°, thereby perfectly aligning itself with the vehicle. Only the nozzle head rotates during drying, which protects the blower's mechanical system.

The enlarged nozzle heads create an integral effect in the air flow, improving the drying of vehicle sides. This is expedient especially for high vehicles.



High efficiency – low energy costs

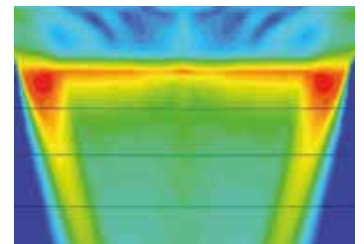


- Common dryer with 45 kW performance
- WashTec dryer with 27 kW performance

Choose between a drying station with one or two roof dryers



Enlarged nozzle head



Increased airflow at the sides due to integral effect

YOUR ADVANTAGES:

Less operating costs due to energy-saving drying process.

Roof nozzle feeds close to vehicle contour.

Improved side drying even for tall vehicles.

Integral effect optimises the airflow of the roof dryer to side zones of the car.

Optimum drying result.

Frequency converters ensure gentle control and optimum positioning to the vehicle.

Easy to retrofit,
no matter which
system you are
operating.