



→ Overhead Touch-Free In-Bay Automatic

TurboJet XT™



 **WashTec**

Innovations that separate you from the competition.

Turbo technology



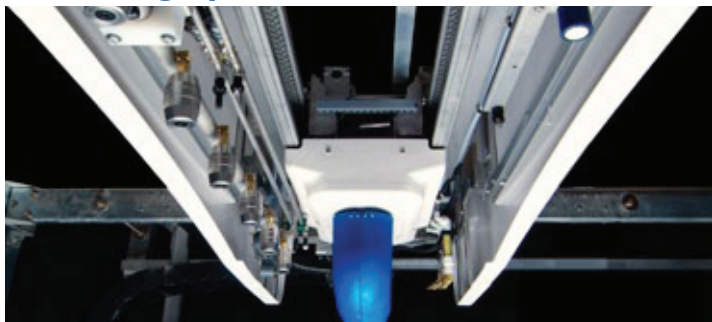
→ WashTec is the industry leader in touch-free washing using turbo technology, which provides greater impingement on the vehicle surface while using less water than other spray systems.

Separate high pressure manifold



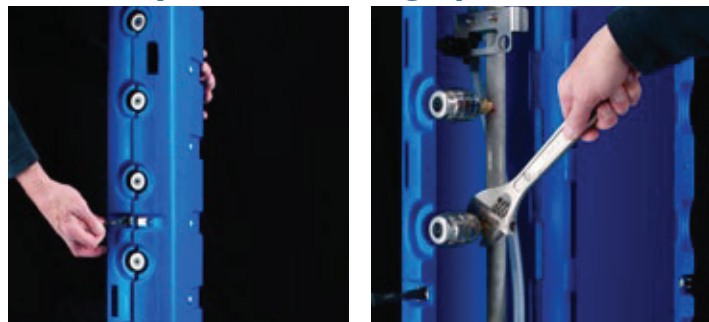
→ By separating top and side high pressure, the full-width top manifold can be shut off after the front-to-rear pass while the arm continues to travel around the back and sides, dramatically reducing water consumption and lowering operating costs.

Offset high pressure manifolds



→ The rotating arm is positioned in front of the top turbo nozzles to eliminate the spray interference and reduced wash quality found in other inverted L systems.

Safe, easy-to-service high pressure arm



→ The arm cover is made of safe, durable polyurethane in a clamshell design that is easy to open for servicing the nozzles, eliminating the awkward process of removing and re-installing the arm cover required to service other inverted L systems.

WashTec turbo nozzles



→ Our unique turbo nozzles with tungsten carbide tips last 40-50% longer between rebuilds than turbo nozzles found on other touch-free systems, reducing maintenance costs and downtime.

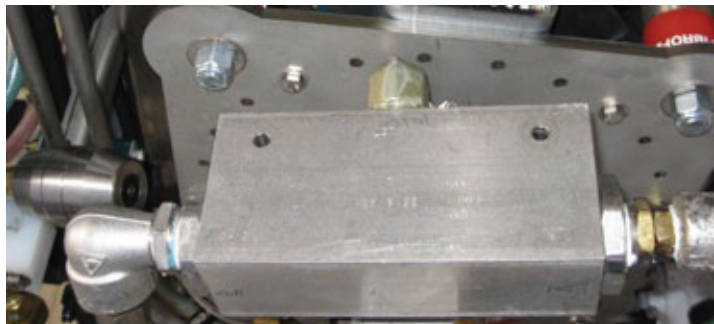
Wheel & rocker blasters



→ Two large body turbo nozzles at the bottom provide extra cleaning power on the wheels and rocker panels.

Technology to clean better and lower operating costs.

Diverter valve



→ A special WashTec-designed changeover valve (patent pending) senses incoming pressure and directs fluid either to low pressure presoak nozzles or high pressure turbo nozzles, eliminating the need for a dual-port swivel that's an expensive replacement part on other inverted L systems.

SenseAround™



→ Unique tilt-sensing technology (patent pending) recognizes when the arm contacts a mirror, trailer hitch or other extension of the vehicle, backs up the arm, and tries again at a greater distance. Once the obstacle is cleared TurboJet XT remembers the travel pattern on subsequent passes around the vehicle.

High pressure pumping plant



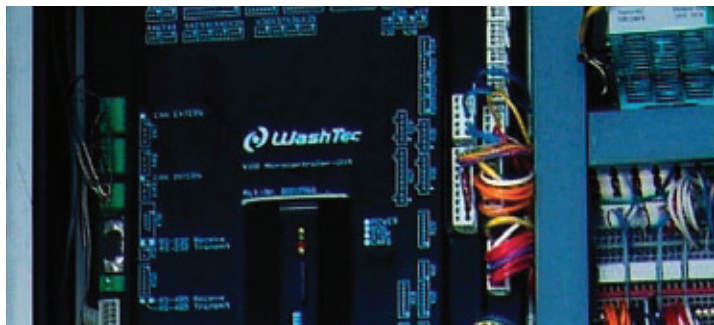
→ CAT 2530 pumping plant can be located in the equipment room or placed in the bay (space permitting) and protected with optional ABS plastic covers.

AquaDri® dryers



→ WashTec's 30hp on-board and 30hp or 40hp freestanding dryers provide best-in-class drying results proven on thousands of WashTec in-bay automatics.

K100 controller



→ Provides unparalleled flexibility to create wash programs and control speed to ensure optimal cleaning results and maximize choices for the customer.

Optional floor-mounted frame



→ A wall-mounted frame is standard, but for bays greater than 17 feet wide a floor-mounted aluminum frame is available.

Revenue enhancing options to boost your bottom line.

Custom branding



→ Accent panels on the front and back of the bridge covers can be custom printed with your graphics and logo to reinforce your brand to your customers.

Triple-foam conditioner



→ Customers love the colorful display and scent provided by tri-color foamed chemicals used to enhance the cleaning process and are willing to pay more for wash packages that include them.

Premium wax system



→ When combined with the typical clearcoat and spot free rinse applications, the premium wax system enables the use of chemicals such as Rain-X® and LustraShield™ to provide extended protection on all vehicle surfaces while driving incremental revenue for the carwash operator.

How green is it?

	Time (min:sec)		Chemical (oz)		Water (gal)		Electricity (kW)	
	Volvo S-40	Toyota 4Runner	Volvo S-40	Toyota 4Runner	Volvo S-40	Toyota 4Runner	Volvo S-40	Toyota 4Runner
Premium Wash	3:04	3:06	3.13	3.18	32.6	33.0	0.896	0.907
Express Wash	2:19	2:21	2.13	2.18	21.6	22.0	0.655	0.665

Detailed data is available from your WashTec representative.

Express wash: presoak, high pressure wash, wax, spot free rinse

Premium wash: undercarriage [not included in wash time], presoak, high pressure wash, triple foam, high pressure rinse, wax, spot free rinse

→ We share our numbers and let you decide for yourself. We're confident you'll find that the TurboJetXT is as energy efficient and cost effective to operate as any touch-free rollover system on the market.

Dimensions:

- Height without on-board dryer: 125.1" / 317.8cm
- Height with on-board dryer: 130.6" / 331.8cm
- Track Width: 151.5" / 384.8"
- Bridge Width: 154.0" / 391.2cm
- Bridge Depth: 36.4" / 92.5cm
- Dryer Depth: 30.0" / 76.2cm

Vehicle Clearance:

- Height: 90.6" / 230.1cm
- Width: 137.0" / 348.0cm

Bay Size:

- Minimum Height for on-board dryer: 138.0" / 350.5cm
- Minimum Height without on-board dryer: 132.0" / 335.3cm
- Minimum Width: 175.0" / 444.5cm
- Minimum Length: 28.0' / 8.5m
- Maximum Vehicle Length without on-board dryer: track length minus 48.0" / 121.9cm
- Maximum Vehicle Length with on-board dryer: track length minus 114.0" / 289.6cm

Utilities:

- Electrical: 380-415VAC 50Hz 3Ø 35Amp without dryer
- Electrical: 380-415VAC 50Hz 3Ø 54Amp with 30hp on-board dryer
- Minimum Water Pressure: 50 PSI / 3.5 bar
- Maximum Water Pressure: 80 PSI / 5.5 bar
- Minimum Water Demand: 20 GPM / 76 LPM
- Minimum Air Supply: ½" line with 80 PSI / 5.5 bar
- Maximum Air Supply: 150 PSI / 10.3 bar
- Air Consumption Demand: Constant 1 CFM / 28 LPM
Intermittent 3 CFM / 85 LPM
Triple foam 25 CFM / 708 LPM

*A truly innovative “inverted L”
from the global leader in
vehicle cleaning systems.*



TurboJet XT™

Not your average inverted L

→ Separate top & side manifolds for less spray interference and reduced water consumption

→ Turbo technology for better cleaning and even more water savings

→ K100 microprocessor-based controller for total flexibility when configuring wash packages

→ Engineered to achieve the lowest total cost of ownership

The "World of WashTec" has everything for your success.



- **Comprehensive range:** The right solution for your washing business can always be found.
 - **Roll-over car washes** for low, medium and high washing volumes
 - **Conveyor tunnel systems** with modular design for all sizes and all requirements
 - **Commercial vehicle washes** for washing companies and in-house requirements
 - **Self-service washing equipment** with modular design for all needs and different location sizes
 - **Water treatment** – chemical-free and environmentally friendly
 - **WashTec chemicals** – cleaning and care products for all car washes
- **Rapid Service** – nationwide support 7 days a week from technicians armed with state-of-the-art equipment and service vehicles stocked with everything needed to keep you washing cars
- **Customized financing plans** – we will promote your business at fair conditions.
- **Reliable experience** – innovative car washing technology for more than 40 years. **More than 2 million cars are cleaned in WashTec washing facilities every day.**
- **Value for money services:**
 - **Site analysis** for optimum sizing of your business
 - **Cost-effectiveness calculations** help with your planning
 - **Sales training for staff** increases revenue
- **Tested quality** EN ISO 9001, I4001 certification – for your safety.



© 2010 WashTec Australia Pty Ltd. Specifications subject to change without notice. Rain-X is a trademark of Ecolab Inc. Total Turtle is a trademark of Turtle Wax Inc.

WashTec Australia Pty Ltd
1, 33 Maddox Street
Alexandria, NSW
2015 Australia

Phone: +61 (0)2 8394-5000 (Australia)
Fax: +61 (0)2 8394-5099 (Australia)
Email: info@washtec.com.au
Web: www.washtec.com.au

Represented in New Zealand by
Car Kleen New Zealand Limited
B9, 1066 Great South Road
Penrose, Auckland
New Zealand

Phone: +64 (0)9 276-1960
Fax: +64 (0)9 276-1962
Email: cknz@xtra.co.nz